

PHOTOMETRIC TEST REPORT

DECOR PRO ROUND FIXED -
TEXTURED WHITE - 4002691

astro

DECOR PRO ROUND FIXED - TEXTURED

astro

LIGHT EFFICIENCY:

72 Lumen/Watt

LIGHT QUALITY:

CRI: 94.9

COLOR TEMPERATURE:

2732 K

OUTPUT: 856 lm

PEAK: 4932 cd

POWER: 11.9 W

PF: 0.95



Tracking number: [n/a](#)

Product name:

Decor Pro Round Fixed - Textured White - 4002691

Item number:

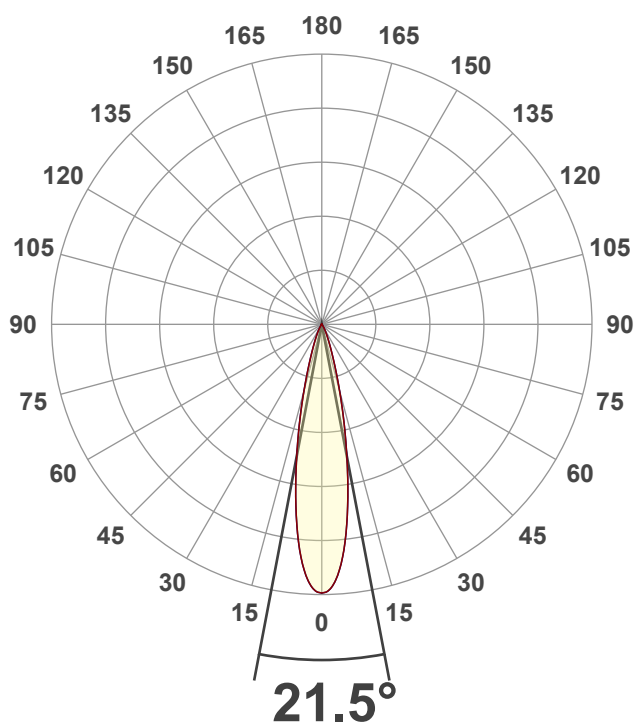
DRF-TW-HQ27G1-15G1-X-D1

Date and time:

31/01/2025 09:30:39

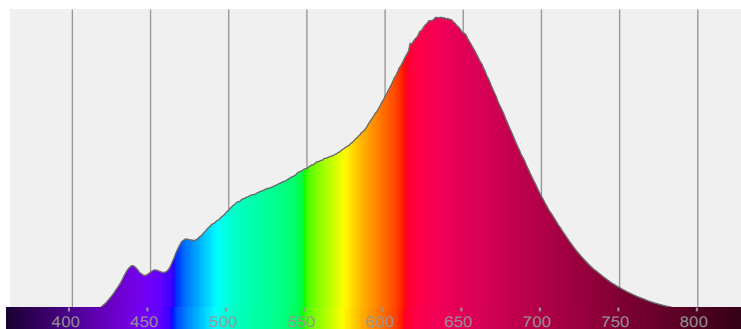
Description:

IP20 LED Downlight

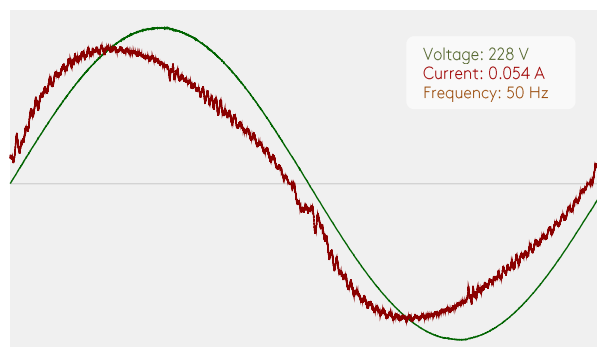


CIE 1931
x: 0.458
y: 0.410

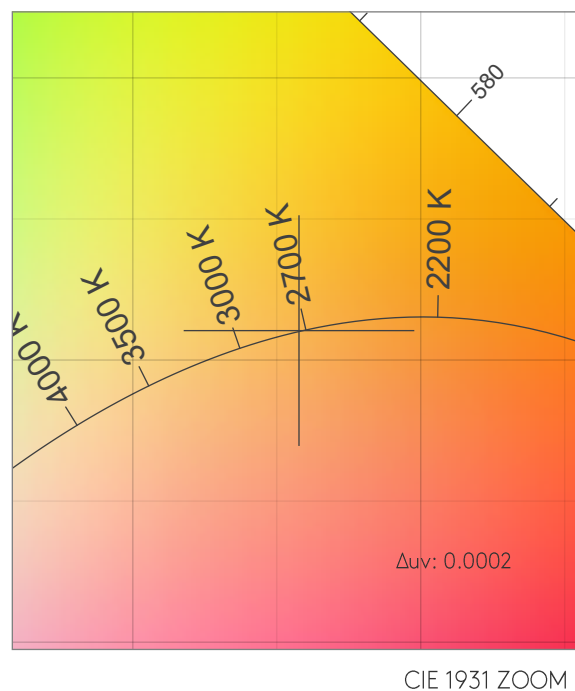
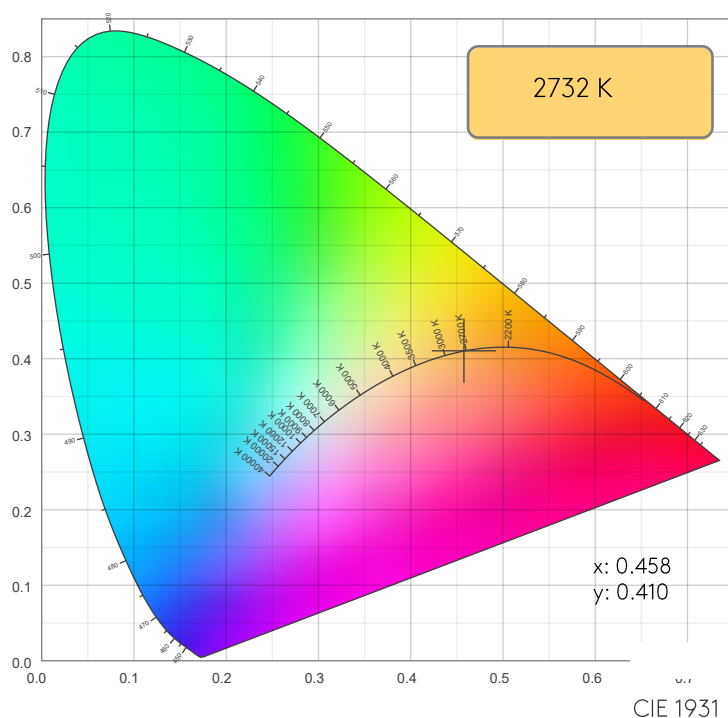
SPECTRA



POWER

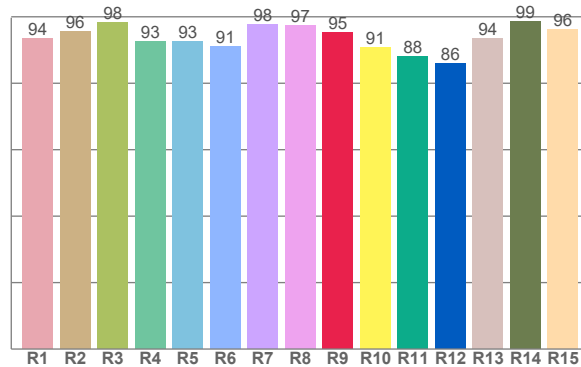
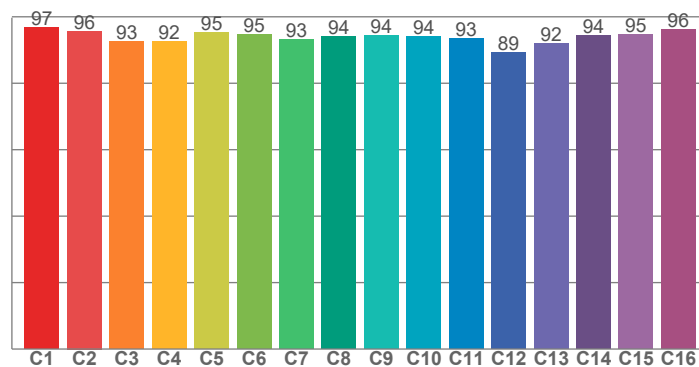


COLOR DETAILS



TM30: 94.1

CRI: 94.9 (R1-R8)



CRI R values, only R1-R8 are used to calculate final CRI value

R1	R2	R3	R4	R5	R6	R7	R8	R9	R10	R11	R12	R13	R14	R15
93.6	95.6	98.3	92.5	92.6	91.1	97.8	97.4	95.3	90.8	88.1	86.0	93.5	98.6	96.2

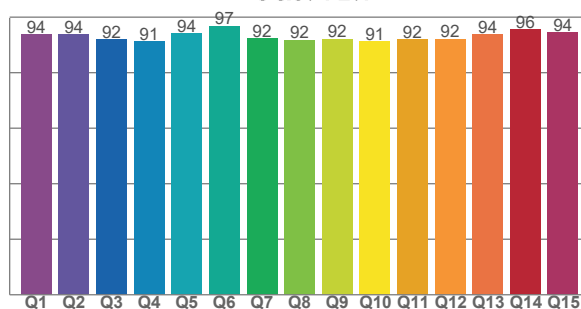
TM30 C values, 16 binned values out of total of 99 C values

C1	C2	C3	C4	C5	C6	C7	C8	C9	C10	C11	C12	C13	C14	C15	C16
96.8	95.7	92.7	92.5	95.2	94.6	93.3	93.9	94.3	94.1	93.4	89.3	91.9	94.4	94.8	96.2

CQS Q values

Q1	Q2	Q3	Q4	Q5	Q6	Q7	Q8	Q9	Q10	Q11	Q12	Q13	Q14	Q15
93.7	93.8	91.9	91.2	94.1	96.8	92.4	91.7	92.1	91.2	92.0	92.1	93.8	95.6	94.5

CQS: 92.9



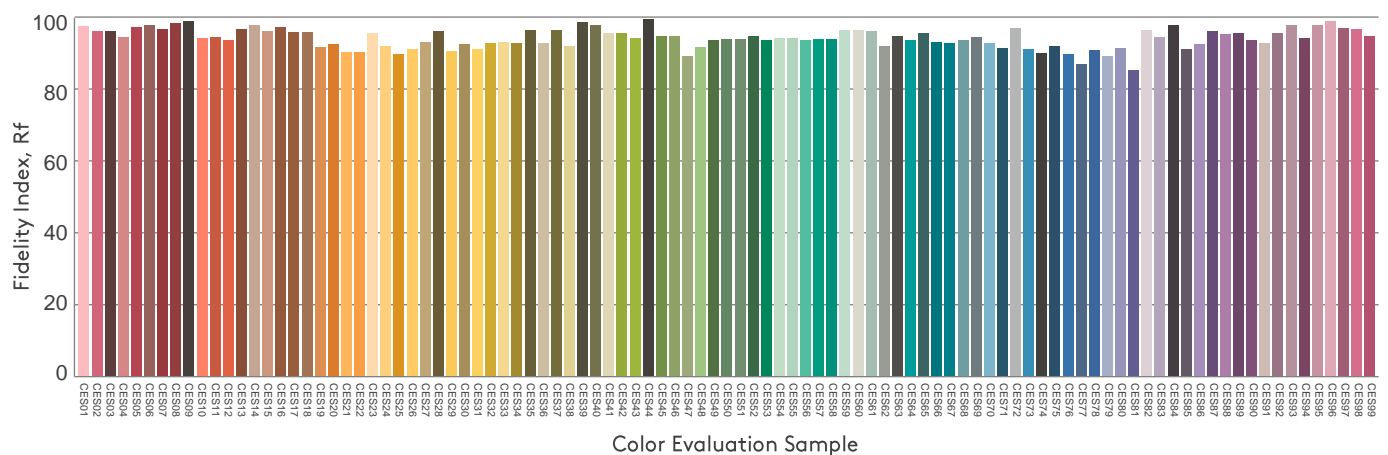
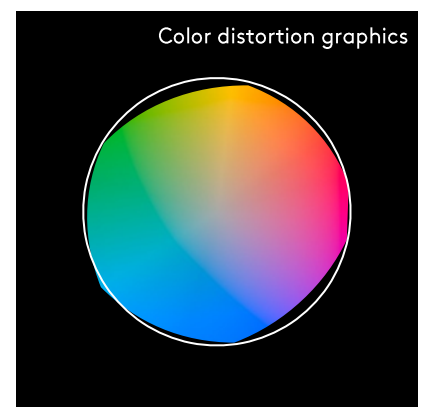
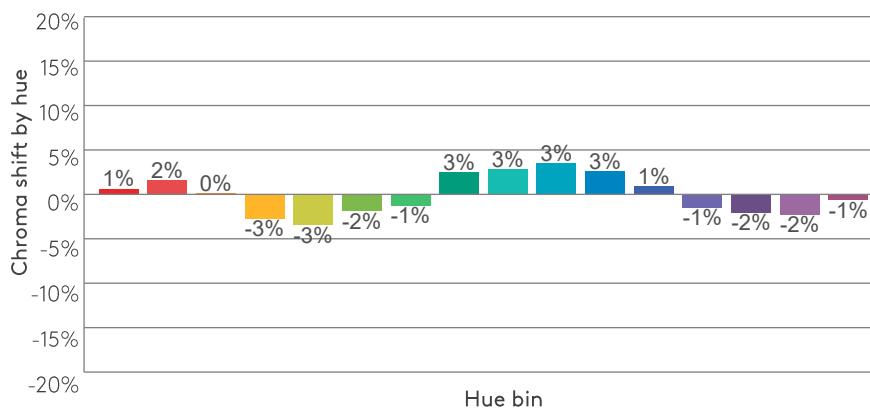
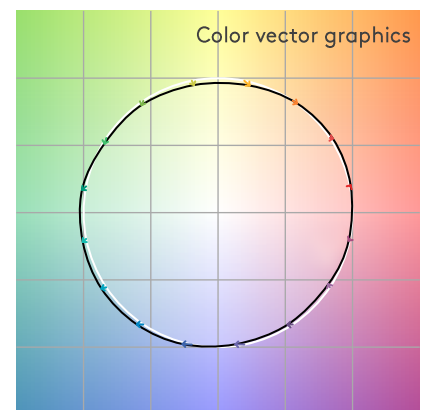
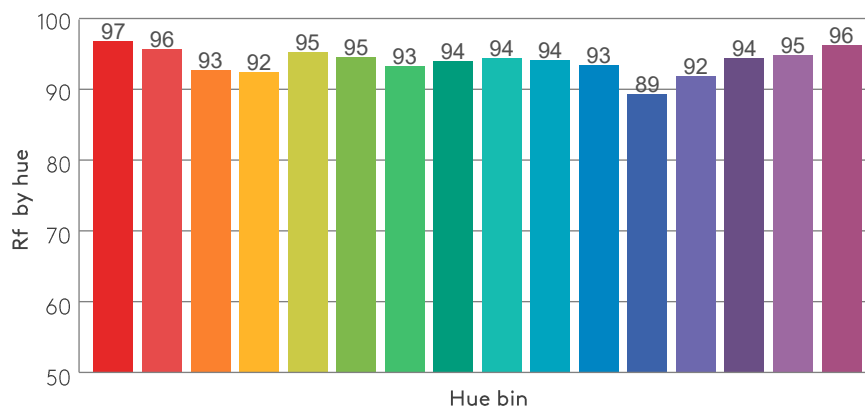
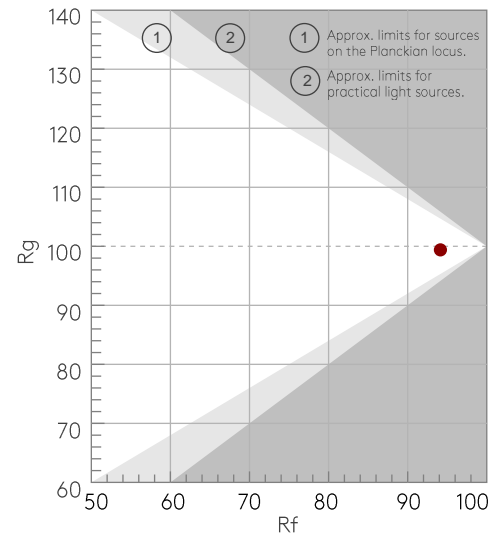
COLOR PARAMETERS

Color temperature	Color rendering index	Red component	Color fidelity	Color gamut	Color quality scale	Color coordinate cie 1931	Color coordinate cie 1931	Color coordinate	Color coordinate	Color deviation from black body
CCT	CRI	CRI R9	TM30 Rf	TM30 Rg	CQS	x	y	u	v	Δuv
2732 K	94.9	95.3	94.1	99.4	92.9	0.458	0.410	0.261	0.351	0.0002

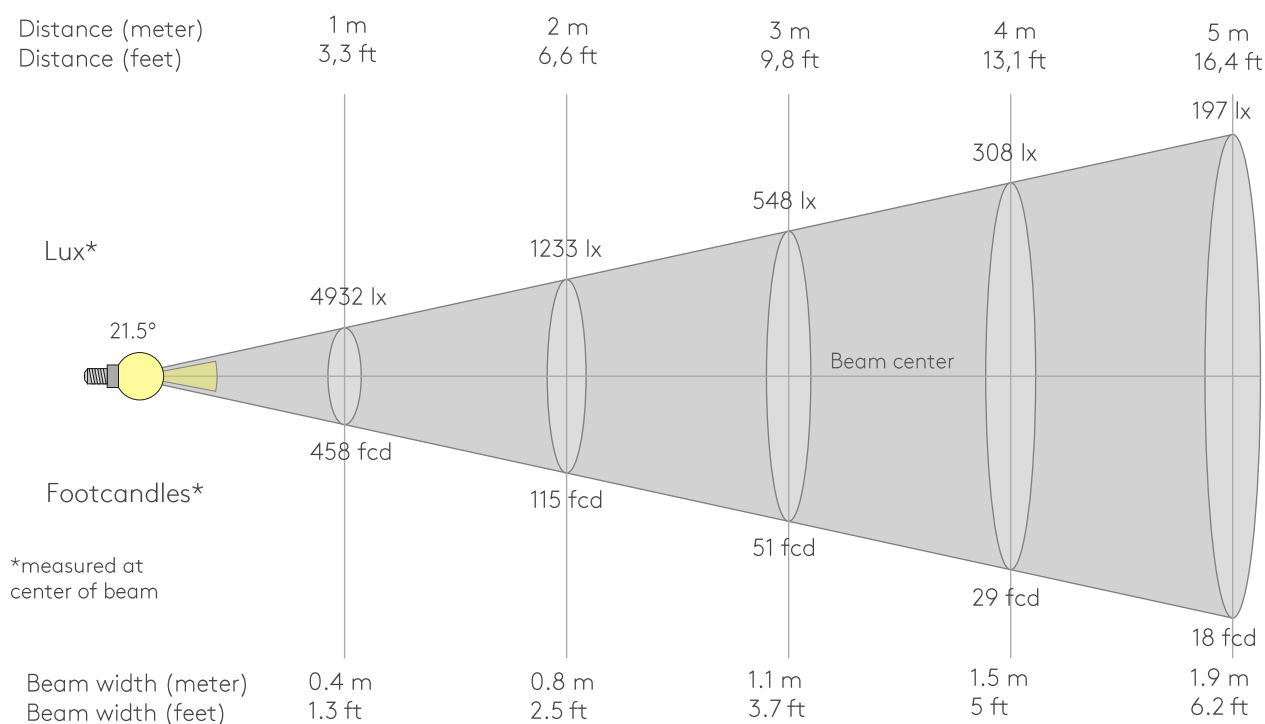
Rf 94.1
Fidelity index Rf

Rg 99.4
Gammut index Rg

Hue Bin	R _f	Graphic shifts (%)	
		Chroma	Hue
1	97	1%	1%
2	96	2%	-2%
3	93	0%	-4%
4	92	-3%	-5%
5	95	-3%	-1%
6	95	-2%	3%
7	93	-1%	4%
8	94	3%	3%
9	94	3%	2%
10	94	3%	-1%
11	93	3%	-4%
12	89	1%	-7%
13	92	-1%	-6%
14	94	-2%	-3%
15	95	-2%	1%
16	96	-1%	-1%



BEAM DETAILS



Beam intensities from 1-20m

1m	2m	3m	4m	5m	6m	7m	8m	9m	10m	11m	12m	13m	14m	15m	16m	17m	18m	19m	20m
3.3ft	6.6ft	9.8ft	13.1ft	16.4ft	19.7ft	23ft	26.2ft	29.5ft	32.8ft	36.1ft	39.4ft	42.7ft	45.9ft	49.2ft	52.5ft	55.8ft	59.1ft	62.3ft	65.6ft
4932lx	1233lx	548lx	308lx	197lx	137lx	101lx	77lx	61lx	49lx	41lx	34lx	29lx	25lx	22lx	19lx	17lx	15lx	14lx	12lx
458.2fcd	114.6fcd	50.9fcd	28.6fcd	18.3fcd	12.7fcd	9.4fcd	7.2fcd	5.7fcd	4.6fcd	3.8fcd	3.2fcd	2.7fcd	2.3fcd	2fcd	1.8fcd	1.6fcd	1.4fcd	1.3fcd	1.1fcd

Intensities in 0° c-plane

0°	2°	4°	6°	8°	10°	12°	14°	16°	18°	20°	22°	24°	26°	28°	30°	32°	34°	36°	38°
4932	4843	4541	4047	3404	2718	2071	1507	1048	718	499	354	253	183	133	95	69	47	31	21
100%	98%	92%	82%	69%	55%	42%	31%	21%	15%	10%	7%	5%	4%	3%	2%	1%	1%	1%	0%

Intensities in 90° c-plane

0°	2°	4°	6°	8°	10°	12°	14°	16°	18°	20°	22°	24°	26°	28°	30°	32°	34°	36°	38°
4932	4843	4541	4047	3404	2718	2071	1507	1048	718	499	354	253	183	133	95	69	47	31	21
100%	98%	92%	82%	69%	55%	42%	31%	21%	15%	10%	7%	5%	4%	3%	2%	1%	1%	1%	0%

Intensities in 180° c-plane

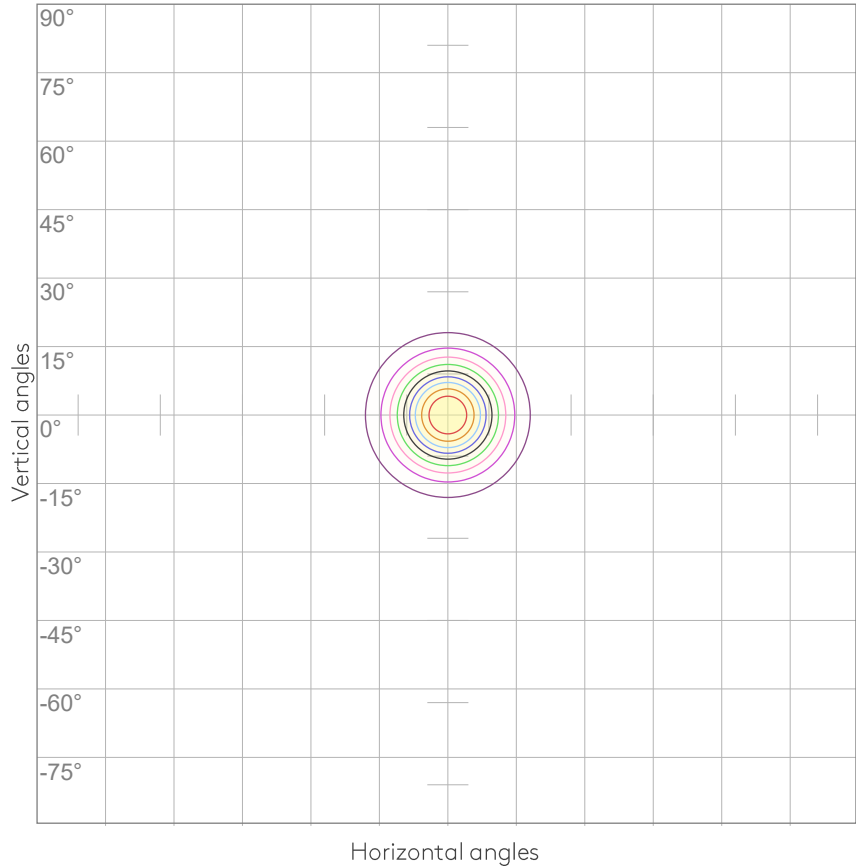
0°	2°	4°	6°	8°	10°	12°	14°	16°	18°	20°	22°	24°	26°	28°	30°	32°	34°	36°	38°
4932	4843	4541	4047	3404	2718	2071	1507	1048	718	499	354	253	183	133	95	69	47	31	21
100%	98%	92%	82%	69%	55%	42%	31%	21%	15%	10%	7%	5%	4%	3%	2%	1%	1%	1%	0%

Intensities in 270° c-plane

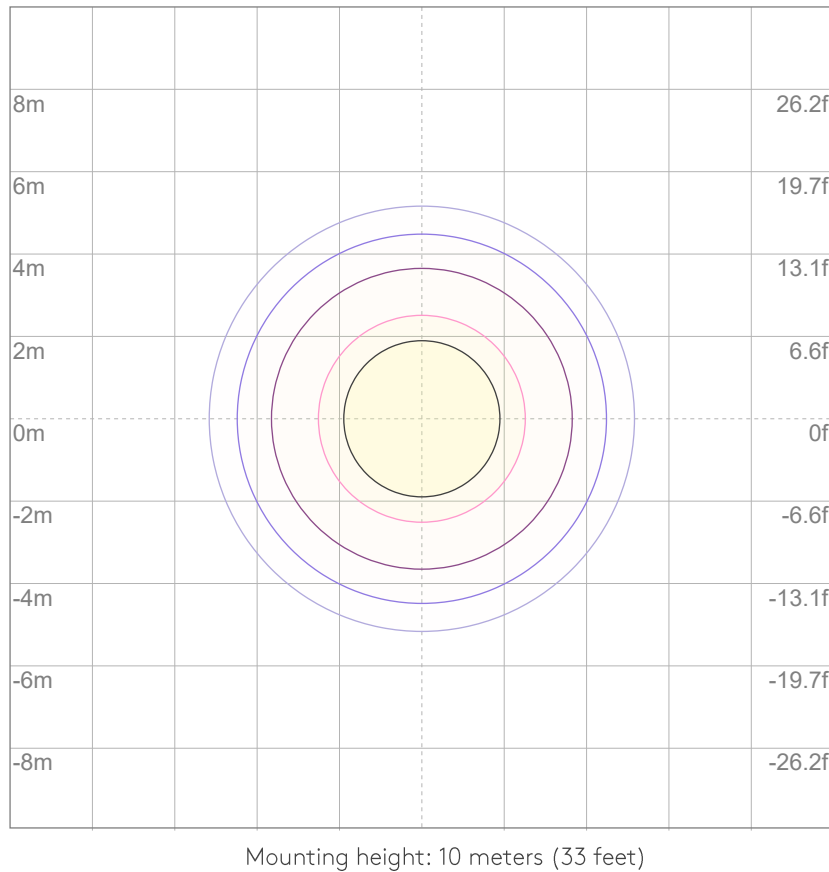
0°	2°	4°	6°	8°	10°	12°	14°	16°	18°	20°	22°	24°	26°	28°	30°	32°	34°	36°	38°
4932	4843	4541	4047	3404	2718	2071	1507	1048	718	499	354	253	183	133	95	69	47	31	21
100%	98%	92%	82%	69%	55%	42%	31%	21%	15%	10%	7%	5%	4%	3%	2%	1%	1%	1%	0%

Beam angle 50%	Field angle 10%	Cutoff angle 2,5%	Intensity ratio in 120° cone	Intensity ratio in 90° cone
21.5°	40.1°	57°	99.7%	99.5%

ISO CANDELA DIAGRAM



ISO LUX DIAGRAM



UGR

GLARE EVALUATION ACCORDING TO UGR

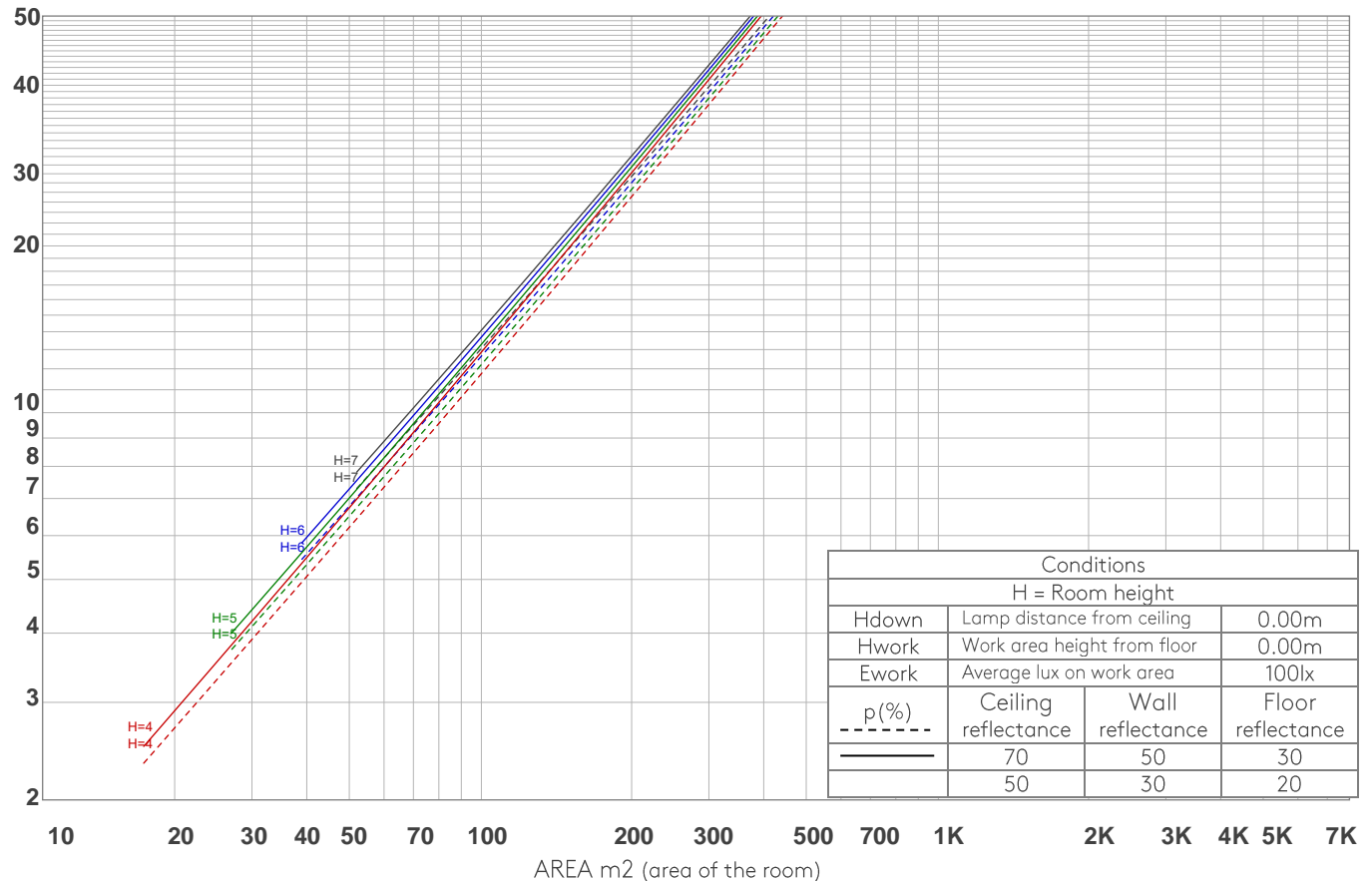
p Ceiling		70	70	50	50	30	70	70	50	50	30
p Walls		50	30	50	30	30	50	30	50	30	30
p Floor		20	20	20	20	20	20	20	20	20	20
Room size X Y		Viewing direction at right angles to lamp axis					Viewing direction parallel to lamp axis				
2H	2H	9.7	10.0	9.7	10.2	10.4	9.7	10.0	9.7	10.2	10.4
	3H	9.3	9.9	9.7	10.1	10.2	9.3	9.9	9.7	10.1	10.2
	4H	9.3	9.8	9.7	10.0	10.2	9.3	9.8	9.7	10.0	10.2
	6H	9.3	9.7	9.6	10.0	10.3	9.3	9.7	9.6	10.0	10.3
	8H	9.2	9.6	9.5	10.0	10.3	9.2	9.6	9.5	10.0	10.3
	12H	9.2	9.6	9.5	9.9	10.3	9.2	9.6	9.5	9.9	10.3
4H	2H	9.3	9.8	9.7	10.0	10.2	9.3	9.8	9.7	10.0	10.2
	3H	9.2	9.6	9.5	9.9	10.3	9.2	9.6	9.5	9.9	10.3
	4H	9.0	9.4	9.4	9.8	10.3	9.0	9.4	9.4	9.8	10.3
	6H	8.9	9.4	9.4	9.7	10.1	8.9	9.4	9.4	9.7	10.1
	8H	8.9	9.3	9.4	9.6	10.0	8.9	9.3	9.4	9.6	10.0
	12H	8.8	9.1	9.3	9.5	10.0	8.8	9.1	9.3	9.5	10.0
8H	4H	8.9	9.3	9.4	9.6	10.0	8.9	9.3	9.4	9.6	10.0
	6H	8.8	9.1	9.3	9.5	10.1	8.8	9.1	9.3	9.5	10.1
	8H	8.8	9.0	9.3	9.5	10.2	8.8	9.0	9.3	9.5	10.2
	12H	8.8	8.9	9.4	9.4	10.0	8.8	8.9	9.4	9.4	10.0
12H	4H	8.8	9.1	9.3	9.5	10.0	8.8	9.1	9.3	9.5	10.0
	6H	8.8	9.0	9.3	9.5	10.1	8.8	9.0	9.3	9.5	10.1
	8H	8.8	8.9	9.4	9.4	10.0	8.8	8.9	9.4	9.4	10.0
Variation of the observer position for the luminaire distance S											
S = 1.0H		6.1 / -10.5					6.1 / -10.5				
S = 1.5H		8.8 / -11.7					8.8 / -11.7				
S = 2.0H		10.8 / -12.4					10.8 / -12.4				
Standard table		n/a					n/a				
Correction summand		n/a					n/a				
Corrected glare indices referring to 856 lm total luminous flux											

COEFFICIENTS OF UTILIZATION

Ceiling reflectance	80				70				50			30			10			0
Wall reflectance	70	50	30	10	70	50	30	10	50	30	10	50	30	10	50	30	10	0
Floor reflectance	20	20	20	20	20	20	20	20	20	20	20	20	20	20	20	20	20	0
RCR	(RCR: Room Cavity Ratio) Room Values are expressed as percentage of Lumens delivered to the task surface																	
0	119	119	119	119	116	116	116	116	111	111	111	106	106	106	102	102	102	100
1	115	113	111	110	113	111	109	108	107	106	105	103	102	101	100	99	99	97
2	112	108	105	103	110	107	104	102	103	101	100	101	99	97	98	97	95	94
3	108	104	101	98	107	103	100	97	100	98	96	98	96	94	96	94	93	91
4	105	100	97	94	104	99	96	93	97	94	92	95	93	91	94	92	90	89
5	102	97	93	90	101	96	93	90	94	91	89	93	90	88	92	89	88	87
6	100	94	90	87	99	93	90	87	92	89	86	91	88	86	90	87	85	84
7	97	91	87	85	96	91	87	84	90	86	84	89	86	84	88	85	83	82
8	95	89	85	82	94	88	85	82	87	84	82	87	84	81	86	83	81	80
9	93	86	83	80	92	86	82	80	85	82	80	85	82	80	84	81	79	78
10	91	84	81	78	90	84	80	78	83	80	78	83	80	78	82	79	78	77

LAMPS (number of lamps)

LUMINAIRE BUDGETARY DIAGRAM



ZONAL LUMEN SUMMARY

0°-10°	10°-20°	20°-30°	30°-40°	40°-50°	50°-60°	60°-70°	70°-80°	80°-90°
358 lm	357 lm	107 lm	26.2 lm	3.56 lm	0.959 lm	0.252 lm	0.133 lm	0.123 lm
90°-100°	100°-110°	110°-120°	120°-130°	130°-140°	140°-150°	150°-160°	160°-170°	170°-180°
0.130 lm	0.132 lm	0.124 lm	0.132 lm	0.193 lm	0.373 lm	0.531 lm	0.414 lm	0.094 lm

FLICKER

FLICKER CURVE (COMPLETE SAMPLED)



FLICKER FRAME (FRAME OF ONE FLICKER)



FLICKER FFT (FREQUENCY SCOPE OF FLICKER)



FLICKER RESULTS:

Flicker frequency:	n/a Hz
Flicker index:	n/a
Flicker percentage:	n/a %
SVM: (Visual flicker)	n/a

FLICKER CONDITIONS:

Sample rate:	n/a samples/second
--------------	--------------------